

# 2022 SUPPORT GROUPS FOR GRIEVERS

Cornerstone of Hope's support groups are open to all, regardless of ethnic, cultural and faith backgrounds and are led by professionally trained and experienced facilitators.

Each meeting includes a light meal or refreshments. In order to participate in a support group, you must complete an intake and pay the \$75 intake fee.

Please contact our office at 216-524-4673 to schedule your intake before these registration dates:

Winter 2022 Groups: Thursday, December 16, 2021  
Spring 2022 Groups: Thursday, March 10, 2022  
Summer 2022 Groups: Thursday, June 2, 2022  
Fall 2022 Groups: Thursday, August 25, 2022

- **OVERDOSE LOSS SUPPORT GROUP**  
Thursdays, January 13 - March 17 | 6 p.m. - 8 p.m.  
Thursdays, April 7 - June 9 | 6 p.m. - 8 p.m.  
Thursdays, June 23 - September 1 | 6 p.m. - 8 p.m.  
Thursdays, September 15 - November 17 | 6 p.m. - 8 p.m.
- **ADULT GRIEF SUPPORT GROUP**  
Tuesdays, January 11 - March 15 | 6 p.m. - 8 p.m.  
Tuesdays, April 5 - June 7 | 6 p.m. - 8 p.m.  
Tuesdays, June 21 - August 30 | 6 p.m. - 8 p.m.  
Tuesdays, September 13 - November 15 | 6 p.m. - 8 p.m.
- **CHILD LOSS SUPPORT GROUP**  
Wednesdays, January 12 - March 16 | 6 p.m. - 8 p.m.  
Wednesdays, April 6 - June 8 | 6 p.m. - 8 p.m.  
Wednesdays, June 22 - August 31 | 6 p.m. - 8 p.m.  
Wednesdays, September 14 - November 16 | 6 p.m. - 8 p.m.
- **COMPLICATED LOSS SUPPORT GROUP**  
Tuesdays, January 11 - March 15 | 6 p.m. - 8 p.m.  
Tuesdays, April 5 - June 7 | 6 p.m. - 8 p.m.  
Tuesdays, June 21 - August 30 | 6 p.m. - 8 p.m.  
Wednesdays, September 13 - November 15 | 6 p.m. - 8 p.m.
- **FLIGHT (FAMILIES LIVING IN GRIEF & HEALING TOGETHER):**  
Mondays, January 10 - February 28 | 6 p.m. - 8 p.m.  
Mondays, April 4 - May 23 | 6 p.m. - 8 p.m.  
Mondays, June 20 - August 15 | 6 p.m. - 8 p.m.  
Mondays, September 12 - October 31 | 6 p.m. - 8 p.m.
- **GRANDPARENT GRIEF SUPPORT GROUP**  
Wednesdays, January 12 - March 16 | 6 p.m. - 8 p.m.  
Wednesdays, April 6 - June 8 | 6 p.m. - 8 p.m.  
Wednesdays, June 22 - August 31 | 6 p.m. - 8 p.m.  
Wednesdays, September 14 - November 16 | 6 p.m. - 8 p.m.
- **MURDER LOSS SUPPORT GROUP**  
Thursdays, January 13 - March 17 | 6 p.m. - 8 p.m.  
Thursdays, April 7 - June 9 | 6 p.m. - 8 p.m.  
Thursdays, June 23 - September 1 | 6 p.m. - 8 p.m.  
Thursdays, September 15 - November 17 | 6 p.m. - 8 p.m.
- **PERINATAL & INFANT LOSS SUPPORT GROUP**  
Tuesdays, January 11 - March 1 | 6 p.m. - 8 p.m.  
Tuesdays, April 5 - May 24 | 6 p.m. - 8 p.m.  
Tuesdays, June 21 - August 16 | 6 p.m. - 8 p.m.  
Tuesdays, September 13 - November 1 | 6 p.m. - 8 p.m.
- **SPOUSE LOSS SUPPORT GROUP**  
Wednesdays, January 12 - March 16 | 6 p.m. - 8 p.m.  
Wednesdays, April 6 - June 8 | 6 p.m. - 8 p.m.  
Wednesdays, June 22 - August 31 | 6 p.m. - 8 p.m.  
Wednesdays, September 14 - November 16 | 6 p.m. - 8 p.m.
- **SUICIDE LOSS SUPPORT GROUP**  
Thursdays, January 13 - March 17 | 6 p.m. - 8 p.m.  
Thursdays, April 7 - June 9 | 6 p.m. - 8 p.m.  
Thursdays, June 23 - September 1 | 6 p.m. - 8 p.m.  
Thursdays, September 15 - November 17 | 6 p.m. - 8 p.m.
- **YOUNG ADULT GRIEF SUPPORT GROUP**  
Tuesdays, January 11 - March 15 | 6 p.m. - 8 p.m.  
Tuesdays, April 5 - June 7 | 6 p.m. - 8 p.m.  
Tuesdays, June 21 - August 30 | 6 p.m. - 8 p.m.  
Tuesdays, September 13 - November 15 | 6 p.m. - 8 p.m.
- **TEEN GRIEF SUPPORT GROUP**  
Tuesdays, January 11 - March 15 | 6 p.m. - 8 p.m.  
Tuesdays, April 5 - June 7 | 6 p.m. - 8 p.m.  
Tuesdays, June 21 - August 30 | 6 p.m. - 8 p.m.  
Tuesdays, September 13 - November 15 | 6 p.m. - 8 p.m.
- **CHILDREN'S GRIEF SUPPORT GROUP**  
Tuesdays, January 11 - March 15 | 6 p.m. - 7:30 p.m.  
Tuesdays, April 5 - June 7 | 6 p.m. - 7:30 p.m.  
Tuesdays, June 21 - August 30 | 6 p.m. - 7:30 p.m.  
Tuesdays, September 13 - November 15 | 6 p.m. - 7:30 p.m.



CORNERSTONE OF HOPE'S

# 2022 EDUCATION FOR GRIEVERS

Cornerstone of Hope's education series are open to all, regardless of ethnic, cultural and faith backgrounds and are led by professionally trained and experienced facilitators.

**Please contact our office at 216-524-4673 to register.**

## CONTINUING HOPE

### FRIDAY NIGHT EDUCATION SERIES

#### SUICIDE LOSS

Each part of this six-week series will focus on a new topic around suicide loss with the goal of promoting healing and imparting hope to survivors.

Fridays, January 14 - February 18, 2022 | 6 p.m. - 8 p.m.

Fridays, June 24 - July 29, 2022 | 6 p.m. - 8 p.m.

Fridays, September 16 - October 21, 2022 | 6 p.m. - 8 p.m.

### MONTHLY EDUCATION

#### SUICIDE LOSS

For adults looking to learn more about suicide or grieving the loss of a loved one to suicide.

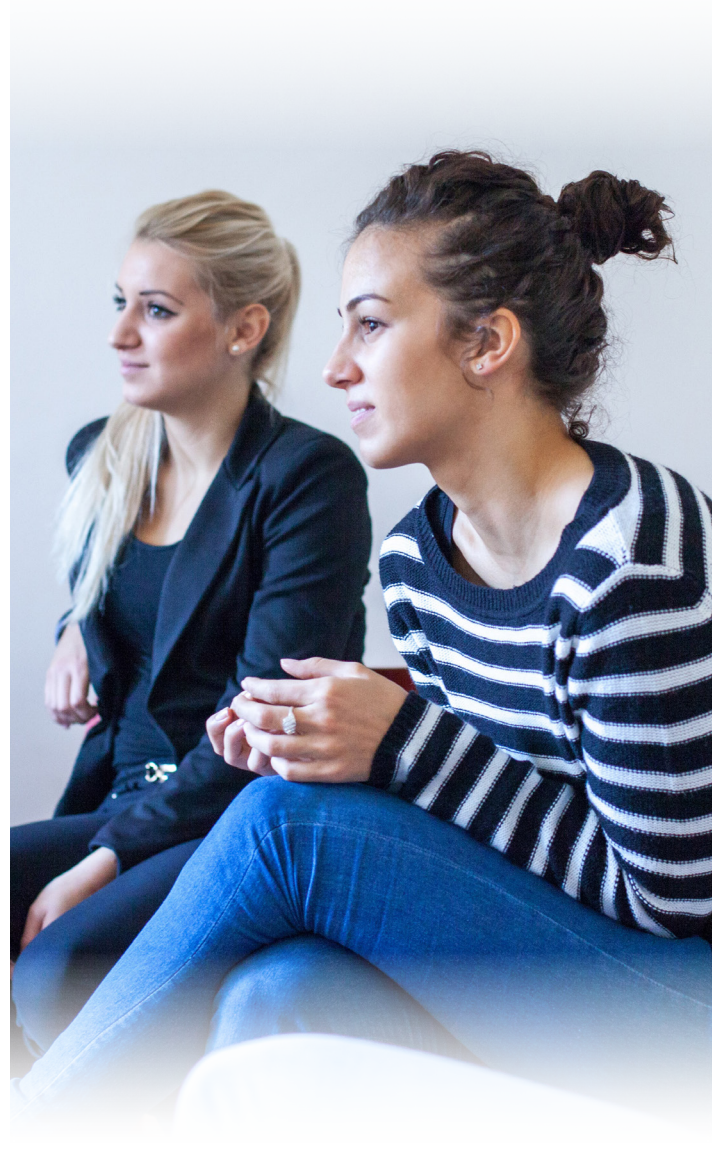
2nd Monday of Every Month | 6 p.m. - 8 p.m.

### HOLIDAY GRIEF SUPPORT

This gathering focuses on tips for coping with the holidays and creating a small memorial project. You may select from the November session or the December session.

Friday, November 11, 2022 | 1 p.m. - 2 p.m.

Tuesday, December 13, 2022 | 6 p.m. - 7 p.m.



**Cornerstone  
of Hope**

**CREATING A WORLD WHERE NO GRIEVING PERSON JOURNEYS ALONE.**

5905 Brecksville Road, Independence, OH 44131 | 216-524-4673 | [cornerstoneofhope.org](http://cornerstoneofhope.org)